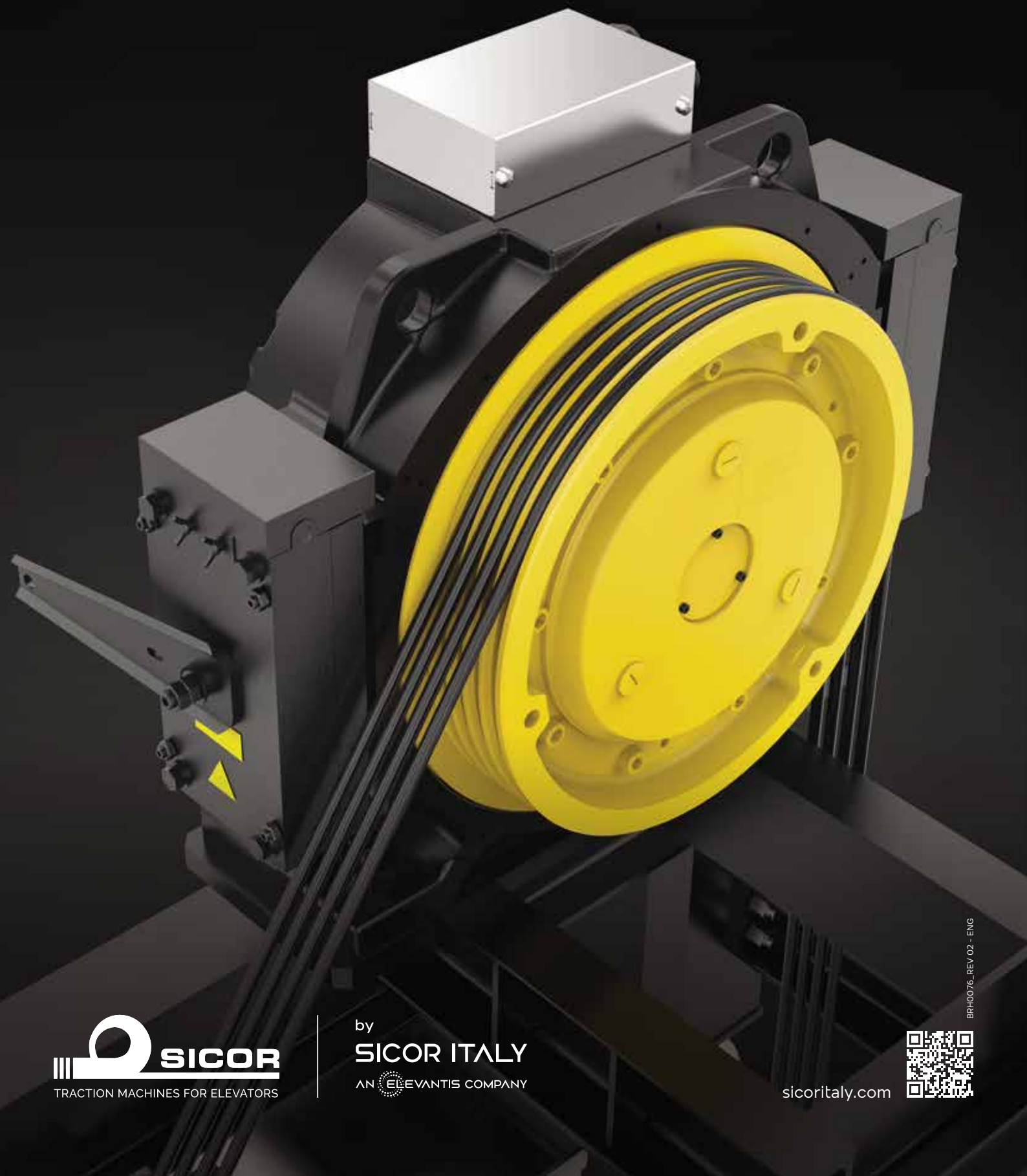


# GEARLESS MACHINES

SGP SERIES





Understanding the market,  
anticipating its needs,  
making them ours and  
building our projects on them.



Sicor, founded in 1981 in Rovereto (TN) as a manufacturer of lifting machines for elevators. Always focused on the application, thanks to a constant process of research and development, Sicor has developed over the years a complete range of products, geared and gearless machines, fit to satisfy the many and varied needs of the market.



Design and production are carried out according to a tested Quality System which guarantees the reliability and performance of the machines.

Each produced motor is subjected to a rigorous final test and quality checks are carried out on all the components.

The test tower allows the verification of machines in the real operating environment of the final customer allowing a perfect set-up.

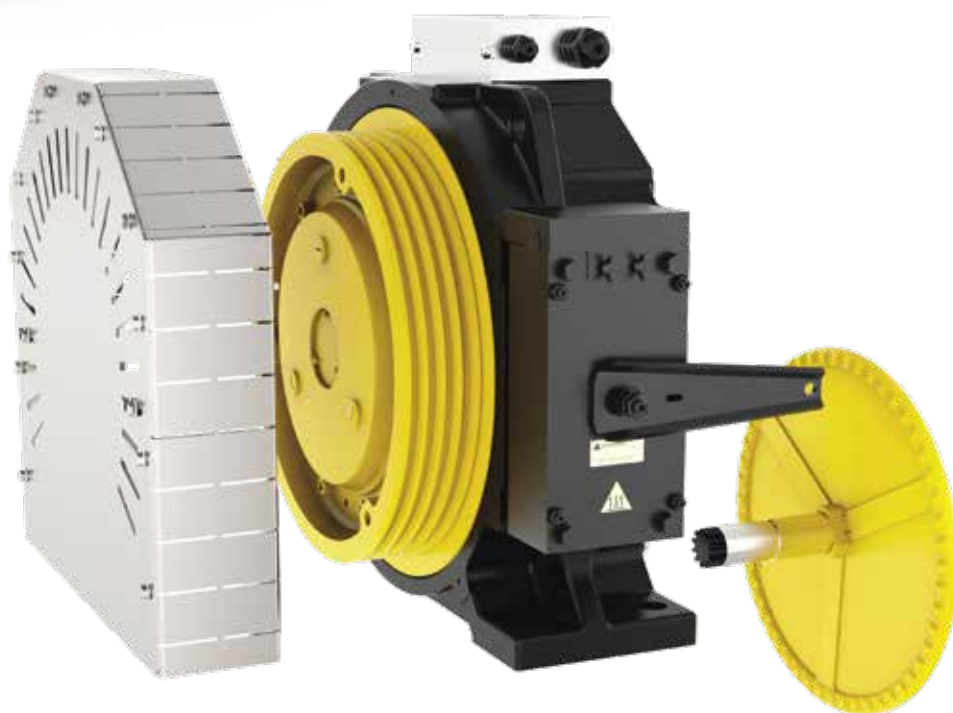
An innovative online product configurator allows to quickly identify the appropriate traction unit based on the main specifications of the lift system.

Sicor has also certified its quality system, its health and safety management system and its environmental management system according to the most important international standards.

The market needs new answers and Sicor offers them through a new vision, made up of agility, innovation, customer involvement and service quality.



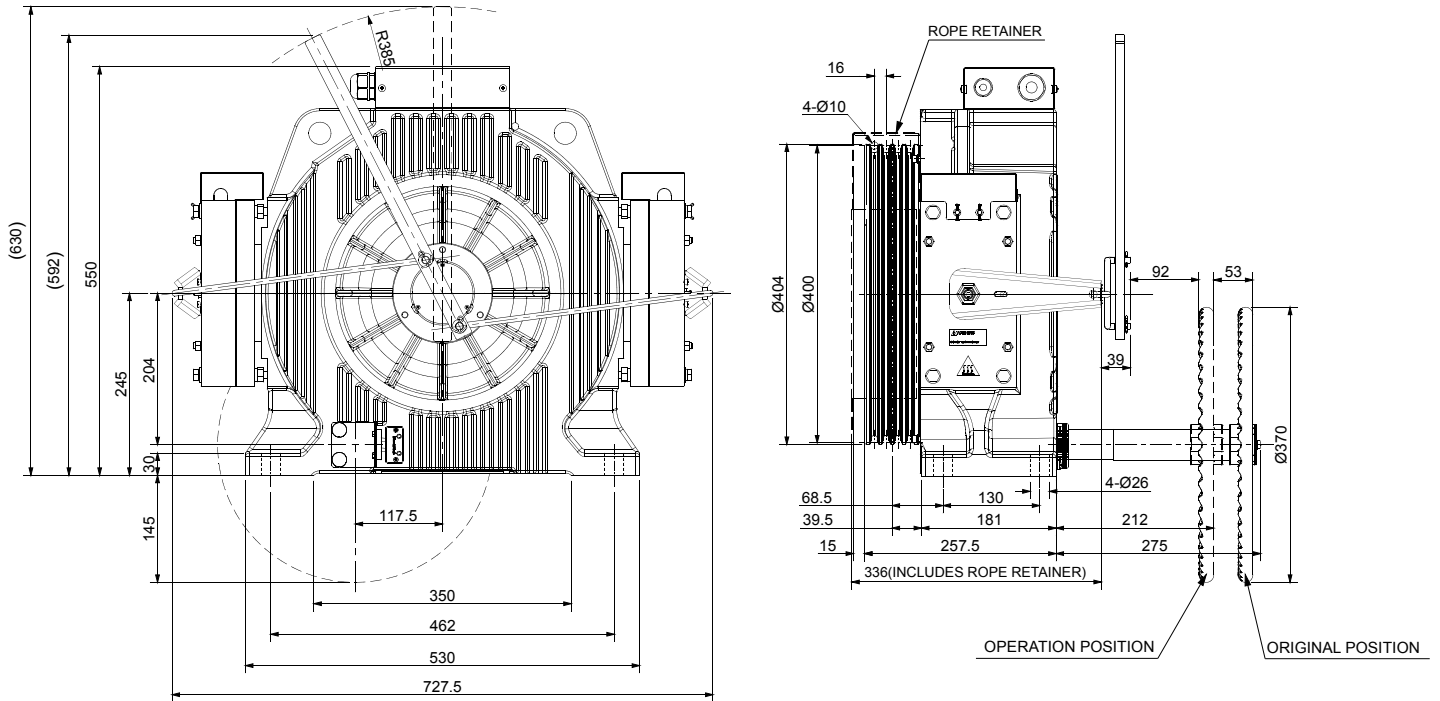
Max Rated Load in 2:1 **630 kg**  
 Max Rated Load in 1:1 **320 kg**



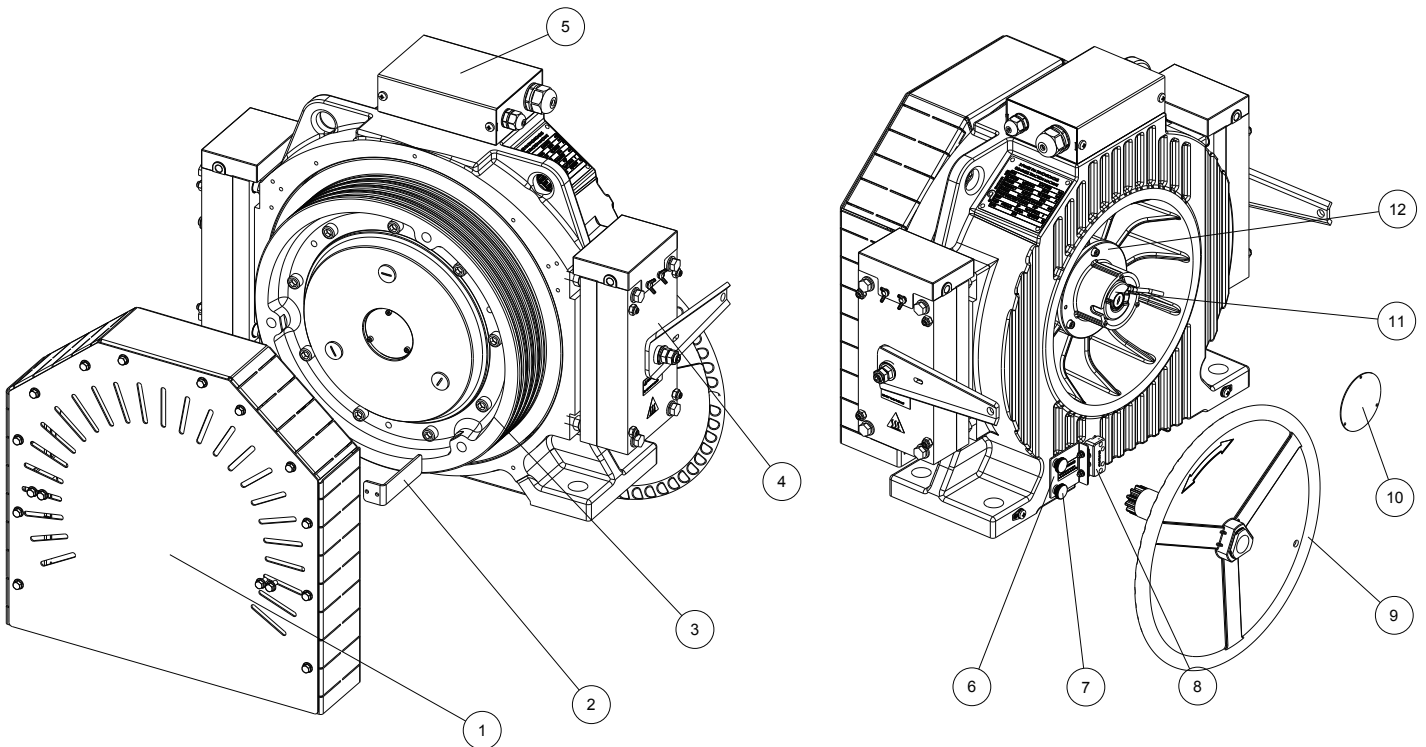
Product SGP 10

Rated torque	[Nm]	400 (S3 -40%)
Braking Torque	[Nm]	2x530
Brake Voltage	[Vdc]	207
Power Range (min/max)	[kW]	2,1 - 7,3
Speed Range	[m/s]	0,5 ... 1,75
Max. Static Load	[kN - kg]	19,6 - 2000
Rated Voltage	[V]	360
Traction Sheave	[mm]	Ø 400
Ropes Diameter	[mm]	8-10
Grooves profile	[ ]	V with undercut
Pitch	[mm]	16
Poles nr	[ ]	32
Encoder	[ ]	ERN1387
Encoder cable: without connector on inverter side	[m]	6
Maximum Weight	[kg]	245

## DIMENSIONS



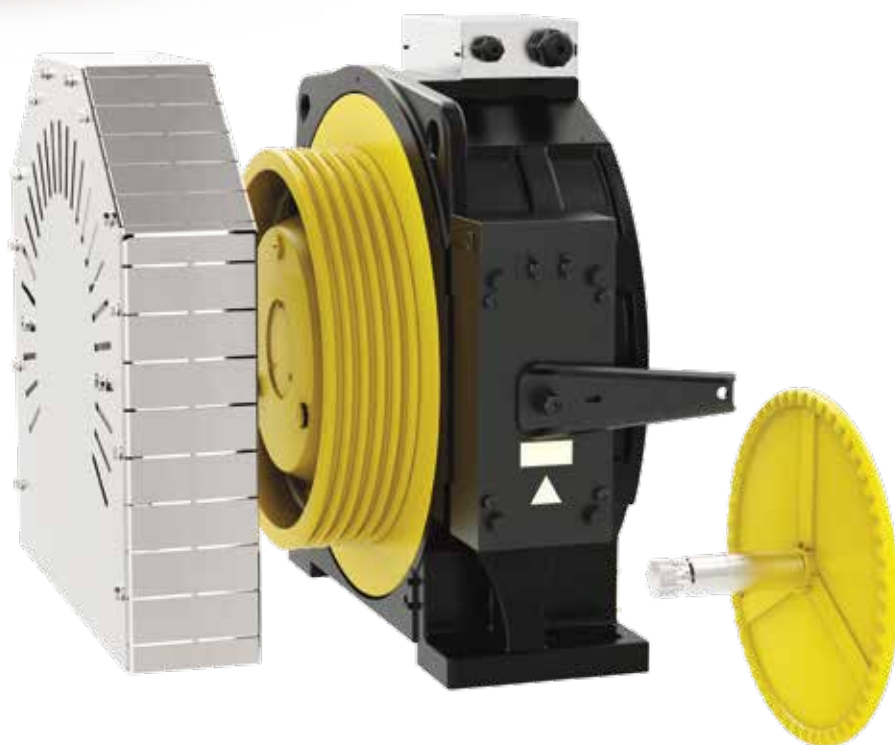
## PARTS - ACCESSORIES LIST



1. Traction sheave protection
2. Rope retainer
3. Traction sheave
4. Brake
5. Terminal box
6. Cover plate
7. Knurled screw
8. Evacuation monitor switch
9. Evacuation hand wheel
10. Encoder protection plate
11. Encoder
12. Encoder assembly flange



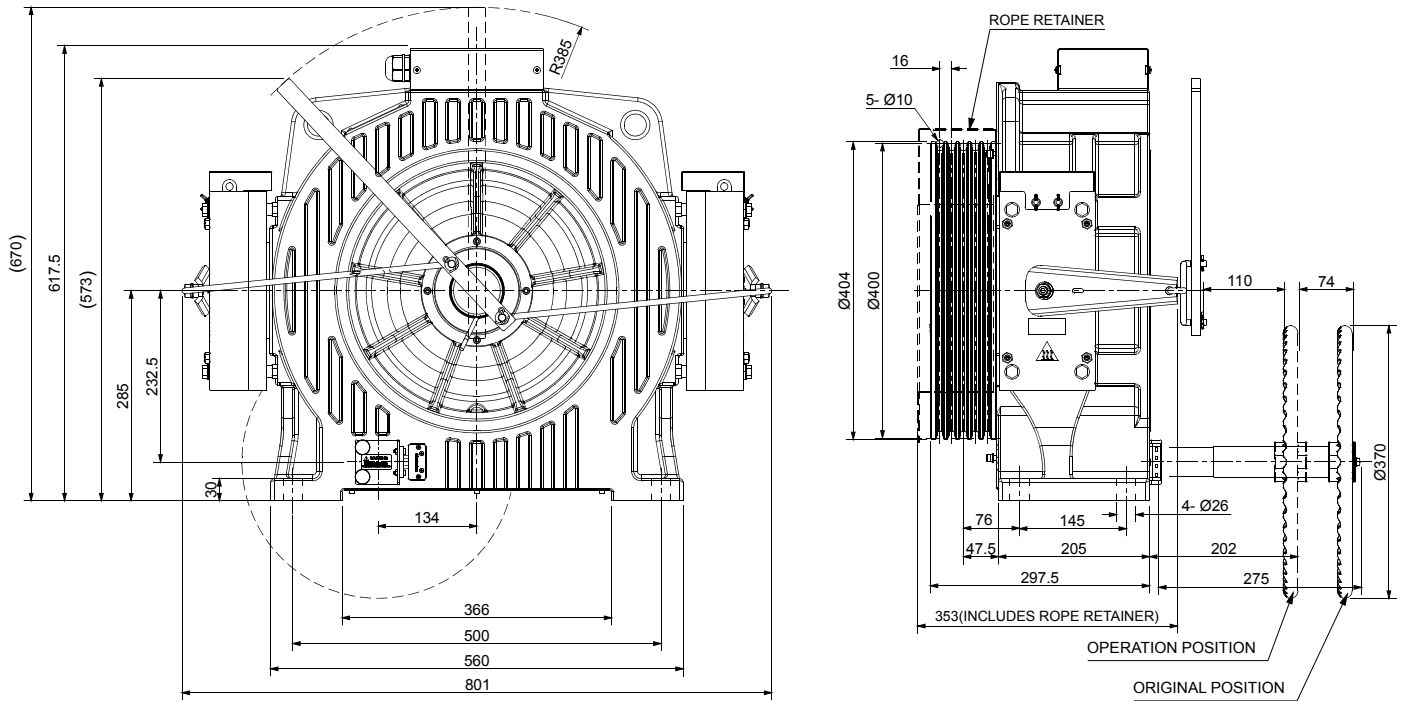
Max Rated Load in 2:1 **1050 kg**  
 Max Rated Load in 1:1 **525 kg**



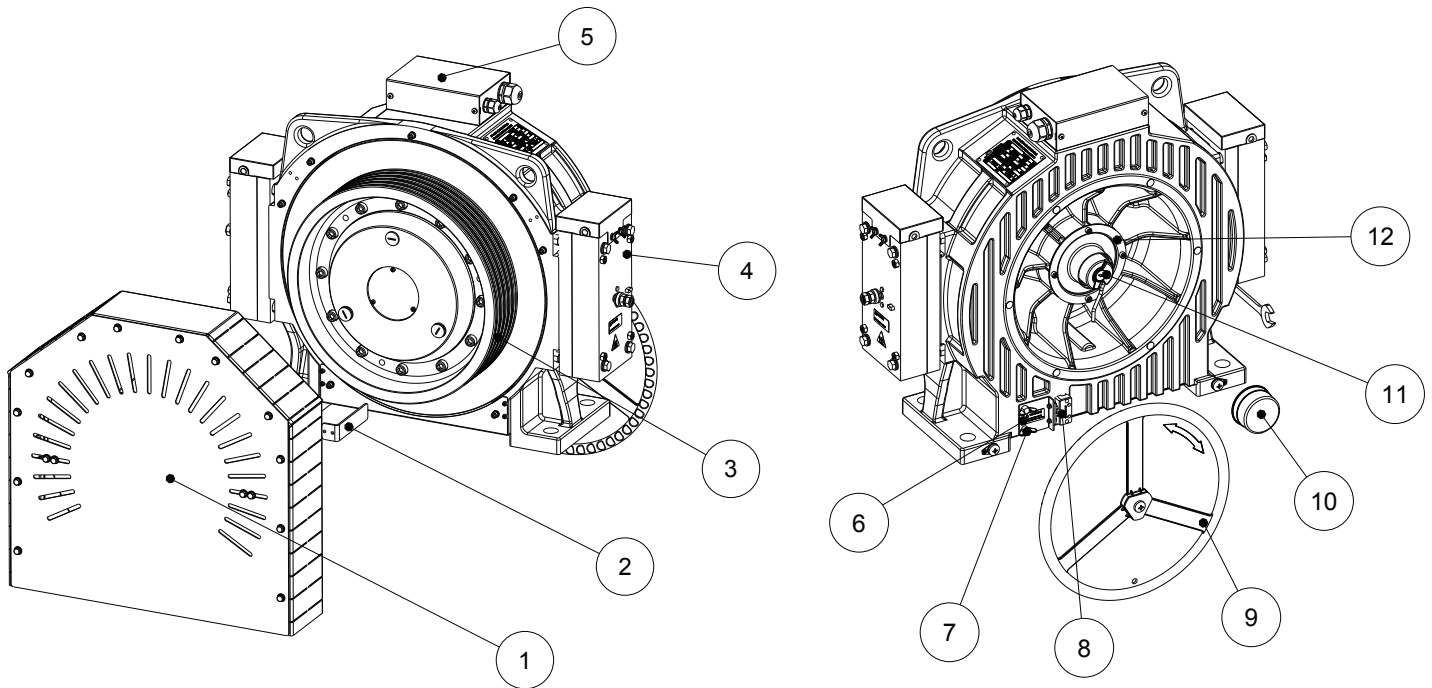
Product SGP 16

Rated torque	[Nm]	669 (S3 -40%)
Braking Torque	[Nm]	2x840
Brake Voltage	[Vdc]	207
Power Range (min/max)	[kW]	3,4 - 11,7
Speed Range	[m/s]	0,5 ... 1,75
Max. Static Load	[kN - kg]	29,4 - 3000
Rated Voltage	[V]	360
Traction Sheave	[mm]	Ø 400
Ropes Diameter	[mm]	8-10
Grooves profile	[ ]	V with undercut
Pitch	[mm]	16
Poles nr	[ ]	32
Encoder	[ ]	ERN1387
Encoder cable: without connector on inverter side	[m]	6
Maximum Weight	[kg]	315

## DIMENSIONS



## PARTS - ACCESSORIES LIST



1. Traction sheave protection
2. Rope retainer
3. Traction sheave
4. Brake
5. Terminal box
6. Cover plate
7. Knurled screw
8. Evacuation monitor switch
9. Evacuation hand wheel
10. Encoder protection plate
11. Encoder
12. Encoder assembly flange



by  
**SICOR ITALY**  
AN  **ELEVANTIS COMPANY**

**Sicor Italy S.R.L.**

Viale Caproni, 32 Rovereto (TN) - Italy · Tel: +39 0464 484 111 · [info@sicoritaly.com](mailto:info@sicoritaly.com)

[www.sicoritaly.com](http://www.sicoritaly.com)