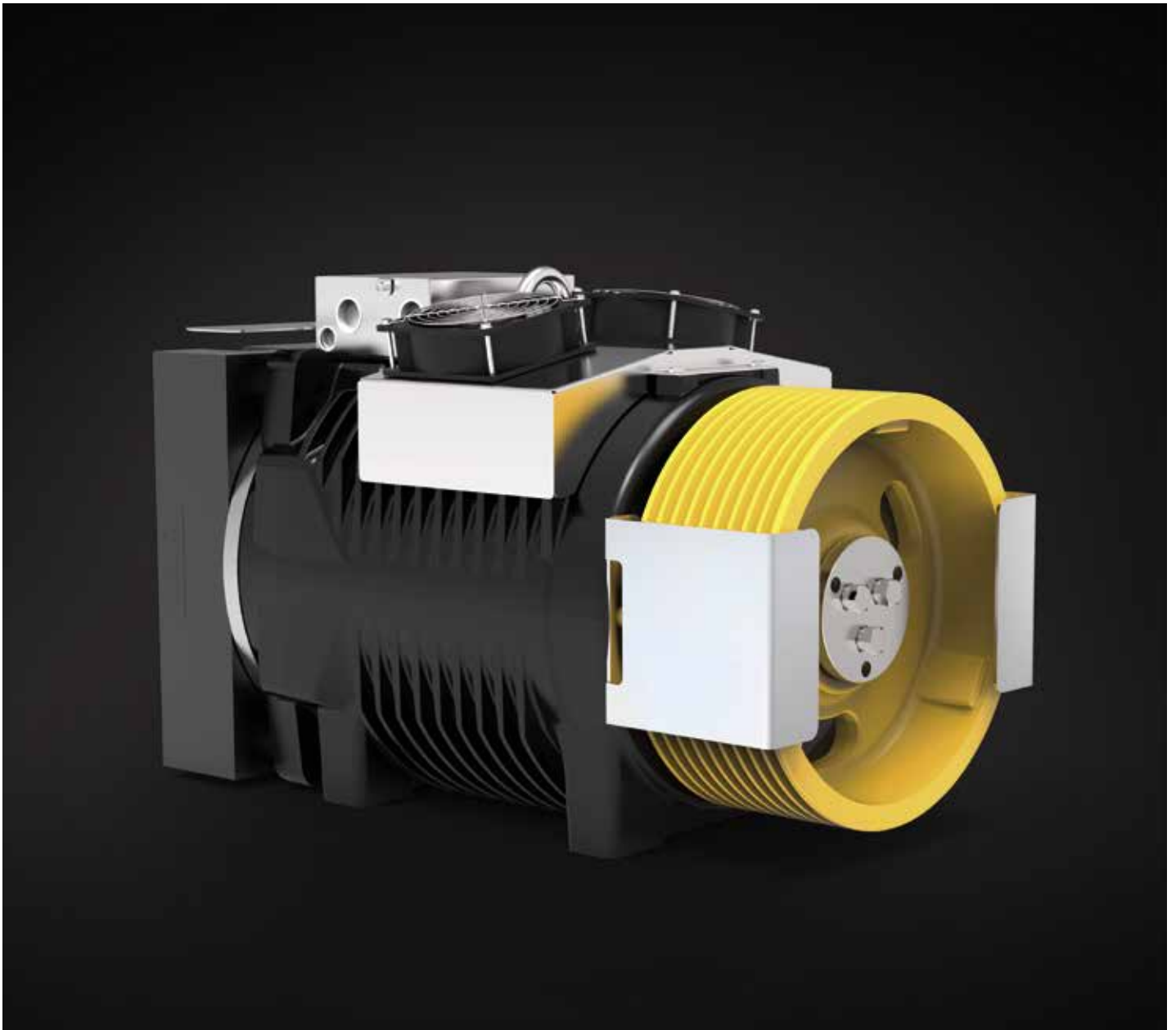



# SG48

## GEARLESS MACHINES SG SERIES



Model	For rated loads up to	Car speed range in 2:1	Traction sheaves diameter range	Max Static Load
	[kg]	[m/s]	[mm]	[kN-kg]
<b>SG48</b> 	<b>1600</b>	0,63 ... 2,50	120(*), 160(*), 200, 210, <b>240</b> , 270, 320, 360, 400, 450, 480, 520	34,3-3500

With sheave on drive side.

\* Pu-coated ropes

Highlighted pulley diameter is the one used to calculate max allowed capacity in standard condition (see calculation for each model).

Sample data; for more detailed evaluations we recommend our product configurator.



# SG48 - SG48F - SG48HF



SG48 Gearless without fan kit

Rated Torque **720 Nm SG48F/HF (S3 40%)**  
 Braking Torque **2x600 Nm (F) - 2x850 Nm (HF)**  
 Power Range (min - max) **4,1 - 23,4 kW**  
 Maximum Static Load **34,3 kN - 3500 kg**  
 Maximum Weight **324 kg (F) 364 kg (HF)**  
 Motor Rated Voltage **360 V - 208 V**



SG48F/HF Gearless with fan kit

## CONFIGURATION EXAMPLES TABLE\*\*

Model	Ø Traction sheave	Car speed	Q Rated load	P Car weight	rpm	P ***	I ***	Installation frequency	Ropes Nr x diameter Ø
	[mm]	[m/s]	[kg]	[kg]	[min <sup>-1</sup> ]	[kW]	[A]	[Hz]	[mm]
SG48185HF	240	0,63	1600	1600	120	7,08	18,97	16,7	10 x Ø 8
SG48185HF	240	1,00	1600	1600	195	11,28	29,37	26,6	10 x Ø 8
SG48185B	240	1,60	1275	1400	275	14,83	34,4	42,4	10 x Ø 8
SG48185HF	320	0,63	1275	1400	120	5,24	18,77	12,5	8 x Ø 8
SG48185HF	320	1,00	1275	1400	120	8,95	20,13	19,9	9 x Ø 8
SG48185BF	320	1,60	1000	1200	195	11,65	25,6	31,8	9 x Ø 8
SG48185BF	320	2,00	1000	1200	375	14,88	36,8	39,7	10 x Ø 8
SG48185BF	320	2,50	1000	1200	310	18,35	39,68	49,7	9 x Ø 8
SG48185HF	400	0,63	1000	1200	65	4,32	11,88	10	4 x Ø 10
SG48185HF	400	1,00	1000	1200	120	7,12	20,05	15,9	5 x Ø 10
SG48185BF	400	1,60	800	950	195	9,09	24,9	25,4	5 x Ø 9
SG48185BF	400	2,00	800	950	195	11,86	26,0	31,9	5 x Ø 10
SG48185BF	400	2,50	675	930	375	12,99	32,1	39,8	5 x Ø 10
SG48185BF	480	0,63	800	950	65	3,40	11,3	--	3 x Ø 10
SG48185BF	480	1,00	800	950	120	5,75	19,3	--	4 x Ø 10
SG48185BF	480	1,60	675	930	195	7,60	24,8	21,2	5 x Ø 8
SG48185BF	480	2,00	675	930	195	9,50	24,8	26,5	5 x Ø 8
SG48185B	520	0,63	630	900	65	2,79	10	7,7	4 x Ø 8
SG48185BF	520	1,00	630	900	120	4,50	16,2	12,3	4 x Ø 8
SG48185BF	520	1,60	630	900	120	7,10	16,2	19,6	4 x Ø 8
SG48185BF	520	2,00	630	900	195	8,90	25,1	24,5	4 x Ø 8

Configurations specifications	
Harmonized standards of reference	EN 81-20 e EN 81-50
Roping - Wrapping type	2:1 - Conventional Single Wrap
Machine position	Top
Compartment efficiency	0,9
Nr of deflecti on pulleys on ball bearing	2 for rated load ≤ 1000 kg - 3 for rated load > 1000 kg
Counterweight balancing	50%
Travel height	30 m
Duty cycle	S3 40%
Starts/hour	180
Wrapping angle	180°
Acceleration	0,3+0,5m/s <sup>2</sup> for car speed ≤ 1 m/s - 0,5+0,7m/s <sup>2</sup> for car speed > 1 m/s

Refer to the product configurator for the value of the short circuit torque, the relative speed and the minimum voltage that allows the operation of gearless machine.

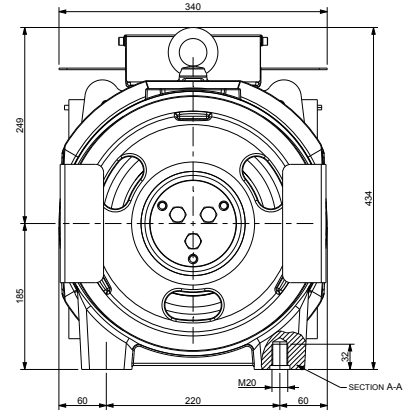
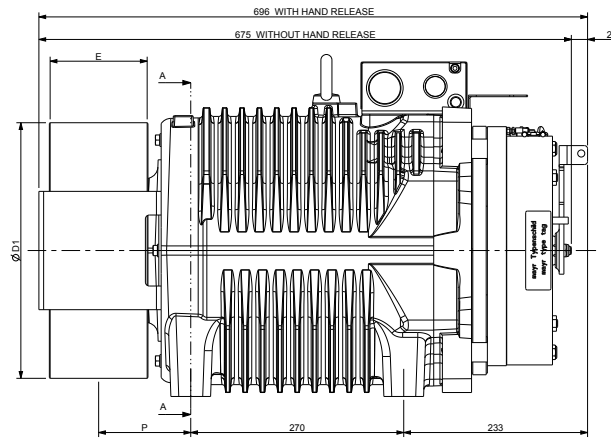
\* Pu-coated ropes

\*\* Sample data; for more detailed evaluations we recommend our product configurator.

\*\*\* Values referred to configuration table (360V)

## SG48 - DIMENSIONS

Mod. SG48185B



Ø D1	E	P	Max Weight	Inertia	Roping System	Torque S3 40%	Max Static Load	Max Power **
[mm]	[mm]	[mm]	[kg]	[kgm <sup>2</sup> ]		[Nm]	[kN - kg]	[kW]
120	125	122	309	0,36	CSW*	600	34,3 - 3500	19,5
160				0,39				
200				0,44				
210				0,47				
240				0,53				
270				0,78				
320				117				
360	100	109		0,94				
400				1,24				
450				1,66				
480				2,29				
520	110	114		2,64				

### Brake Specifications

Braking Torque: 2x600 [Nm]

Standard Supply Voltage: 207 [V DC]

Power: 2x92 [W]

Degree of Protection: IP10

### Standard Encoder Data

Type: Absolute EnDat

Model: Heidenhain ECN 1313

Positions values/rev: 2048 imp 13 bits

Degree of Protection: IP40

Standard Cable Length: 10 [m]

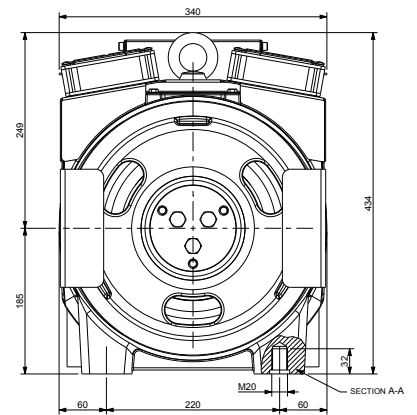
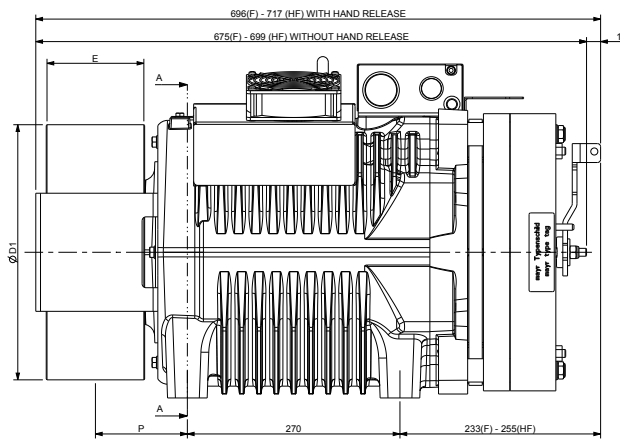
\* CSW: Conventional single wrap.

\*\* Sample data; for more detailed evaluations we recommend our product configurator.

## SG48F/HF - DIMENSIONS

Mod. SG48185BF

Mod. SG48185HF



Ø D1	E	P	Max Weight	Inertia	Roping System	Torque S3 40%	Max Static Load	Max Power **
[mm]	[mm]	[mm]	[kg]	[kgm <sup>2</sup> ]		[Nm]	[kN - kg]	[kW]
120	125	122	324 (F) 364 (HF)	0,36	CSW*	720	34,3 - 3500	23,4
160				0,39				
200				0,44				
210				0,47				
240				0,53				
270				0,78				
320				117				
360	100	109		0,94				
400				1,24				
450				1,66				
480				2,29				
520	110	114		2,64				

### Brake Specifications

Braking Torque (SG48F): 2x600 [Nm]

Braking Torque (SG48HF): 2x850 [Nm]

Standard Supply Voltage: 207 [V DC]

Power (SG48F): 2x92 [W] - (SG48HF): 2x131 [W]

Degree of Protection: IP10

### Standard Encoder Data

Type: Absolute EnDat

Model: Heidenhain ECN 1313

Positions values/rev: 2048 imp 13 bits

Degree of Protection: IP40

Standard Cable Length: 10 [m]

### Ventilation data

Voltage: 220 [V]

Power: 2x16 [W]

\* CSW: Conventional single wrap.

\*\* Sample data; for more detailed evaluations we recommend our product configurator.



by  
**SICOR ITALY**  
AN  ELEVANTIS COMPANY

**Sicor Italy S.R.L.**

Viale Caproni, 32 Rovereto (TN) - Italy · Tel: +39 0464 484 111 · [info@sicoritaly.com](mailto:info@sicoritaly.com)

[www.sicoritaly.com](http://www.sicoritaly.com)