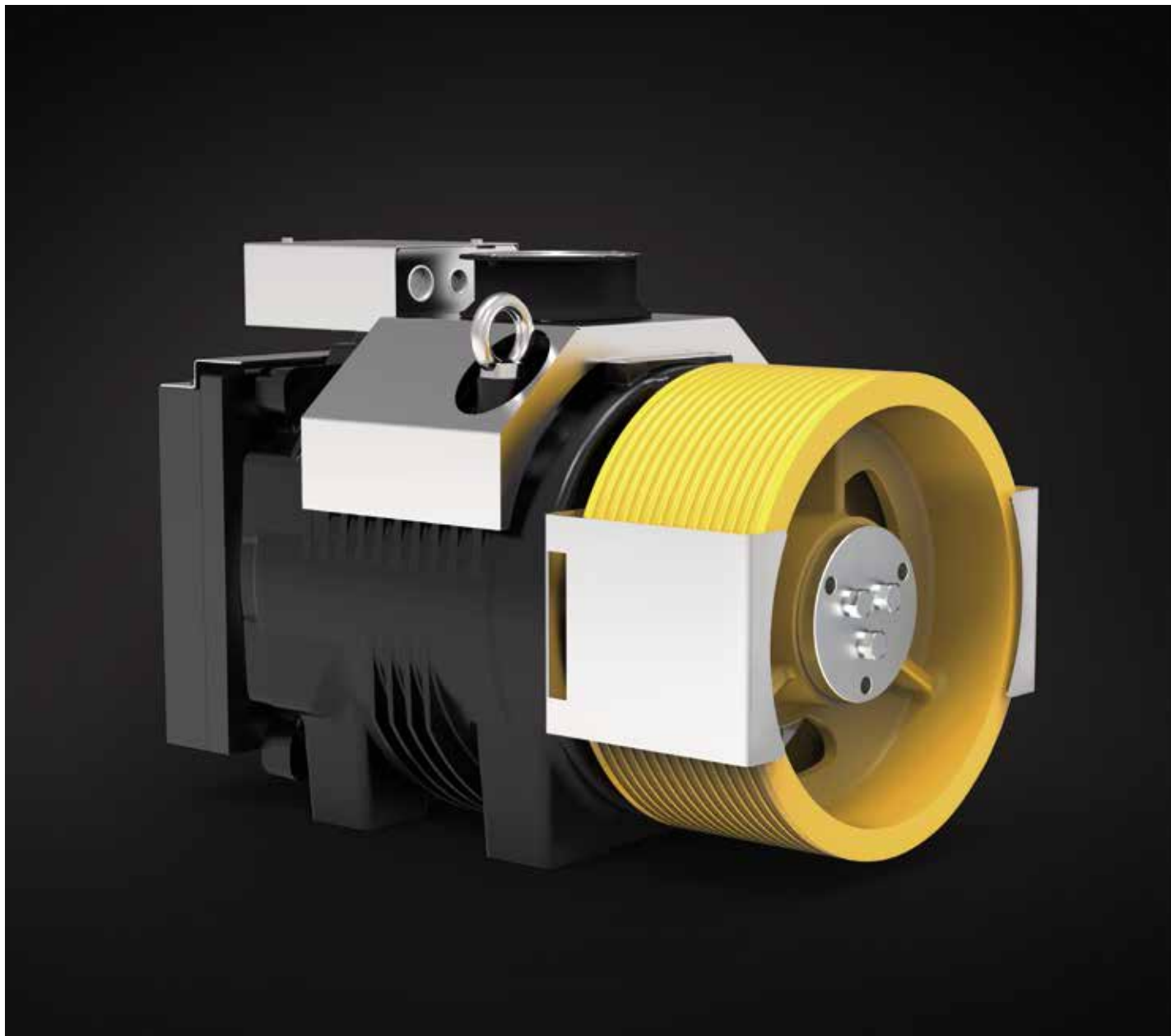



SG62

GEARLESS MACHINES

SG SERIES



| Model | For rated loads up to [kg] | Car speed range in 2:1 [m/s] | Traction sheaves diameter range [mm] | Max Static Load [kN-kg] |
|---|-------------------------------|---------------------------------|---|----------------------------|
|  SG62 | 2000 | 0,63 ... 2,50 | 320, 360, 400 , 440, 480, 520, 600 | 54-5500 |

With sheave on drive side.

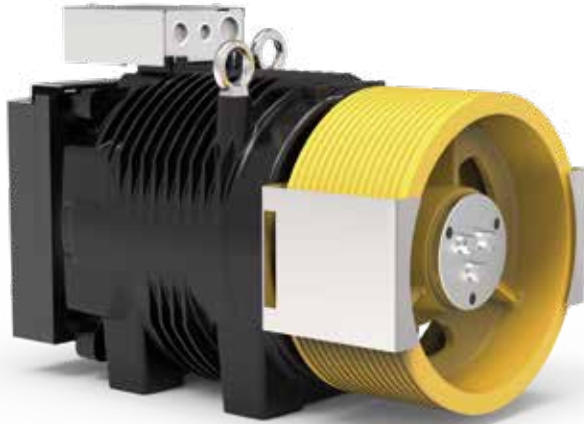
* Pu-coated ropes

Highlighted pulley diameter is the one used to calculate max allowed capacity in standard condition (see calculation for each model).

Sample data; for more detailed evaluations we recommend our product configurator.

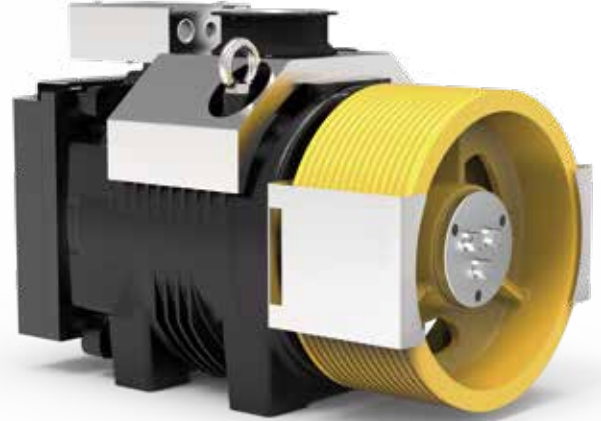


SG62 - SG62F



SG62 Gearless without fan kit

Rated Torque **1310 Nm SG62F (S3 40%)**
 Braking Torque **2x1200 Nm**
 Power Range (min - max) **5,5 - 32,9 kW**
 Maximum Static Load **54 kN - 5500 kg**
 Maximum Weight **520 kg**
 Motor Rated Voltage **360 V**



SG62F Gearless with fan kit

CONFIGURATION EXAMPLES TABLE**

| Model | Ø Traction sheave | Car speed | Q Rated load | P Car weight | rpm | p *** | I *** | Installation frequency | Ropes Nr x diameter Ø |
|-----------|-------------------|-----------|--------------|--------------|----------------------|-------|-------|------------------------|-----------------------|
| | [mm] | [m/s] | [kg] | [kg] | [min ⁻¹] | [kW] | [A] | [Hz] | [mm] |
| SG62220A | 320 | 0,63 | 2000 | 1650 | 96 | 8,56 | 27,2 | 18,8 | 12 x Ø 8 |
| SG62220A | 320 | 1,00 | 2000 | 1650 | 144 | 13,68 | 40,7 | 29,7 | 13 x Ø 8 |
| SG62220AF | 320 | 1,60 | 2000 | 1650 | 192 | 22,24 | 54,0 | 47,7 | 14 x Ø 8 |
| SG62220AF | 360 | 0,63 | 2000 | 1650 | 96 | 8,34 | 29,9 | 16,7 | 10 x Ø 8 |
| SG62220AF | 360 | 1,00 | 2000 | 1650 | 144 | 13,62 | 45,3 | 26,6 | 12 x Ø 8 |
| SG62220AF | 360 | 1,60 | 2000 | 1650 | 192 | 22,24 | 60,8 | 42,4 | 14 x Ø 8 |
| SG62220AF | 360 | 2,00 | 2000 | 1650 | 240 | 27,80 | 75,0 | 53 | 14 x Ø 8 |
| SG62220AF | 400 | 0,63 | 2000 | 1650 | 96 | 8,57 | 34,2 | 15 | 8 x Ø 10 |
| SG62220AF | 400 | 1,00 | 2000 | 1650 | 96 | 13,60 | 34,2 | 23,8 | 8 x Ø 10 |
| SG62220AF | 400 | 1,60 | 1600 | 1600 | 192 | 18,48 | 56,2 | 38,1 | 9 x Ø 10 |
| SG62220AF | 400 | 2,00 | 1600 | 1600 | 192 | 23,65 | 57,5 | 47,7 | 10 x Ø 10 |
| SG62220A | 400 | 2,50 | 1275 | 1400 | 240 | 23,61 | 56,5 | 59,7 | 8 x Ø 10 |
| SG62220AF | 440 | 0,63 | 1600 | 1600 | 96 | 6,77 | 29,8 | 13,6 | 6 x Ø 10 |
| SG62220AF | 440 | 1,00 | 1600 | 1600 | 96 | 11,14 | 30,7 | 21,7 | 6 x Ø 11 |
| SG62220AF | 440 | 1,60 | 1600 | 1600 | 144 | 18,31 | 46,7 | 34,7 | 7 x Ø 11 |
| SG62220AF | 440 | 2,00 | 1275 | 1400 | 192 | 18,56 | 49,4 | 43,5 | 6 x Ø 11 |
| SG62220AF | 440 | 2,50 | 1275 | 1400 | 240 | 23,12 | 61,0 | 54,2 | 6 x Ø 11 |
| SG62220AF | 480 | 0,63 | 1600 | 1600 | 96 | 6,80 | 32,6 | 12,5 | 5 x Ø 11 |
| SG62220AF | 480 | 1,00 | 1600 | 1600 | 96 | 10,81 | 32,5 | 19,9 | 6 x Ø 10 |
| SG62220AF | 480 | 1,60 | 1275 | 1400 | 144 | 14,27 | 39,7 | 31,8 | 6 x Ø 10 |
| SG62220AF | 480 | 2,00 | 1275 | 1400 | 192 | 17,81 | 52,0 | 39,7 | 6 x Ø 10 |
| SG62220AF | 480 | 2,50 | 1275 | 1400 | 240 | 23,18 | 66,5 | 49,8 | 6 x Ø 11 |
| SG62220AF | 520 | 0,63 | 1600 | 1600 | 48 | 6,61 | 19,0 | 11,5 | 5 x Ø 10 |
| SG62220AF | 520 | 1,00 | 1275 | 1400 | 96 | 8,69 | 28,2 | 18,4 | 5 x Ø 10 |
| SG62220AF | 520 | 1,60 | 1275 | 1400 | 144 | 14,27 | 43,1 | 29,3 | 5 x Ø 11 |
| SG62220AF | 520 | 2,00 | 1275 | 1400 | 192 | 17,93 | 56,5 | 36,8 | 5 x Ø 11 |
| SG62220AF | 520 | 2,50 | 1000 | 1200 | 192 | 17,69 | 44,7 | 46 | 5 x Ø 10 |
| SG62220AF | 600 | 0,63 | 1275 | 1400 | 48 | 5,28 | 17,5 | 10 | 4 x Ø 10 |
| SG62220AF | 600 | 1,00 | 1275 | 1400 | 96 | 8,40 | 31,6 | 15,9 | 4 x Ø 10 |
| SG62220AF | 600 | 1,60 | 1000 | 1200 | 144 | 10,88 | 37,9 | 25,4 | 4 x Ø 10 |
| SG62220AF | 600 | 2,00 | 1000 | 1200 | 144 | 13,62 | 37,9 | 31,8 | 4 x Ø 10 |
| SG62220AF | 600 | 2,50 | 1000 | 1200 | 192 | 17,61 | 51,3 | 39,8 | 4 x Ø 11 |

| Configurations specifications | |
|---|---|
| Harmonized standards of reference | EN 81-20 e EN 81-50 |
| Roping - Wrapping type | 2:1 - Conventional Single Wrap |
| Machine position | Top |
| Compartment efficiency | 0,9 |
| Nr of deflecti on pulleys on ball bearing | 2 for rated load ≤ 1000 kg - 3 for rated load > 1000 kg |
| Counterweight balancing | 50% |
| Travel height | 30 m |
| Duty cycle | S3 40% |
| Starts/hour | 180 |
| Wrapping angle | 180° |
| Acceleration | 0,3+0,5m/s ² for car speed ≤ 1 m/s - 0,5+0,7m/s ² for car speed > 1 m/s |

Refer to the product configurator for the value of the short circuit torque, the relative speed and the minimum voltage that allows the operation of gearless machine.

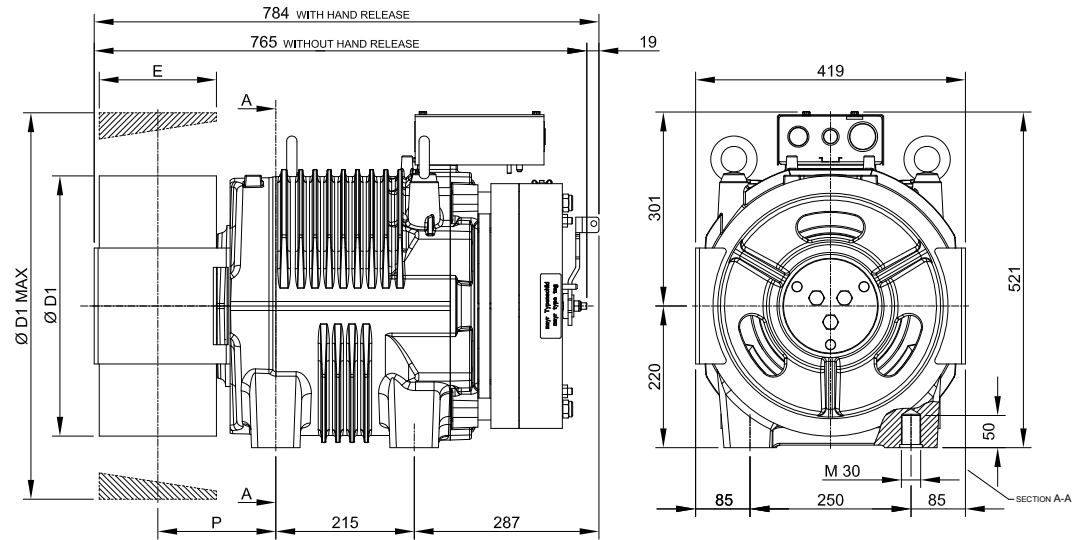
* Pu-coated ropes

** Sample data; for more detailed evaluations we recommend our product configurator.

*** Values referred to configuration table (360V)

SG62 - DIMENSIONS

Mod. SG62220A



| Ø D1 | E | P | Max Weight | Inertia | Roping System | Torque S3 40% | Max Static Load | Max Power ** |
|------|------|------|------------|---------------------|---------------|---------------|-----------------|--------------|
| [mm] | [mm] | [mm] | [kg] | [kgm ²] | | [Nm] | [kN - kg] | [kW] |
| 320 | 182 | 184 | 517 | 1,65 | CSW * | 1090 | 54 - 5500 | 27,4 |
| 360 | | | | 2,05 | | | | |
| 400 | | | | 2,60 | | | | |
| 440 | | | | 3,25 | | | | |
| 480 | | | | 3,65 | | | | |
| 520 | 150 | 168 | | 4,40 | | | | |
| 600 | | | | 6,75 | | | | |

Brake Specifications

Braking Torque: 2x1200 [Nm]
 Standard Supply Voltage: 207 [V DC]
 Power: 2x158 [W]
 Degree of Protection: IP10

Standard Encoder Data

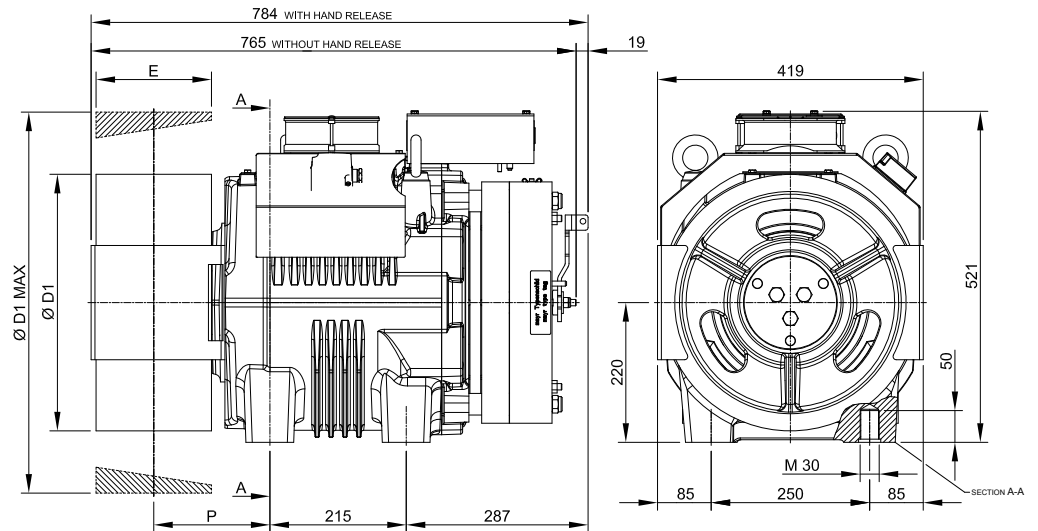
Type: Absolute EnDat
 Model: Heidenhain ECN 1313
 Positions values/rev: 2048 imp 13 bits
 Degree of Protection: IP40
 Standard Cable Length: 10 [m]

* CSW: Conventional single wrap.

** Sample data; for more detailed evaluations we recommend our product configurator.

SG62F - DIMENSIONS

Mod. SG62220AF



| Ø D1 | E | P | Max Weight | Inertia | Roping System | Torque S3 40% | Max Static Load | Max Power ** |
|------|------|------|------------|---------------------|---------------|---------------|-----------------|--------------|
| [mm] | [mm] | [mm] | [kg] | [kgm ²] | | [Nm] | [kN - kg] | [kW] |
| 320 | 182 | 184 | 520 | 1,65 | CSW * | 1310 | 54 - 5500 | 32,9 |
| 360 | | | | 2,05 | | | | |
| 400 | | | | 2,60 | | | | |
| 440 | | | | 3,25 | | | | |
| 480 | | | | 3,65 | | | | |
| 520 | 150 | 168 | | 4,40 | | | | |
| 600 | | | | 6,75 | | | | |

Brake Specifications

Braking Torque: 2x1200 [Nm]
 Standard Supply Voltage: 207 [V DC]
 Power: 2x158 [W]
 Degree of Protection: IP10

Standard Encoder Data

Type: Absolute EnDat
 Model: Heidenhain ECN 1313
 Positions values/rev: 2048 imp 13 bits
 Degree of Protection: IP40
 Standard Cable Length: 10 [m]

Ventilation data

Voltage: 220 [V]
 Power: 1x38 [W]

* CSW: Conventional single wrap.

** Sample data; for more detailed evaluations we recommend our product configurator.



by
SICOR ITALY
AN  ELEVANTIS COMPANY

Sicor Italy S.R.L.

Viale Caproni, 32 Rovereto (TN) - Italy · Tel: +39 0464 484 111 · info@sicoritaly.com

www.sicoritaly.com